

Schäfer Mountain Apartments

Fontanella, Vorarlberg, Austria

Developer

DAS SCHÄFER Betriebs-GesmbH
Family of Rainer and Christine Schäfer



Property description

Under the watchful eye of Christine and Rainer Schäfer, 22 exclusive mountain apartments are currently being constructed in the heart of the Großes Walsertal Biosphere Park. A region that is committed to achieving a sustainable relationship between man and nature. A region that is capable like no other of also achieving a balance in our own lives.



A project very dear to our hearts

"With our mountain apartments we want to offer the future owners more than just a roof over their heads. Our aim is to create an all-round feel-good place to live and nothing is being left to chance in achieving this. From the breathtaking panoramic view out of the window right down to the fittings in the bathroom."

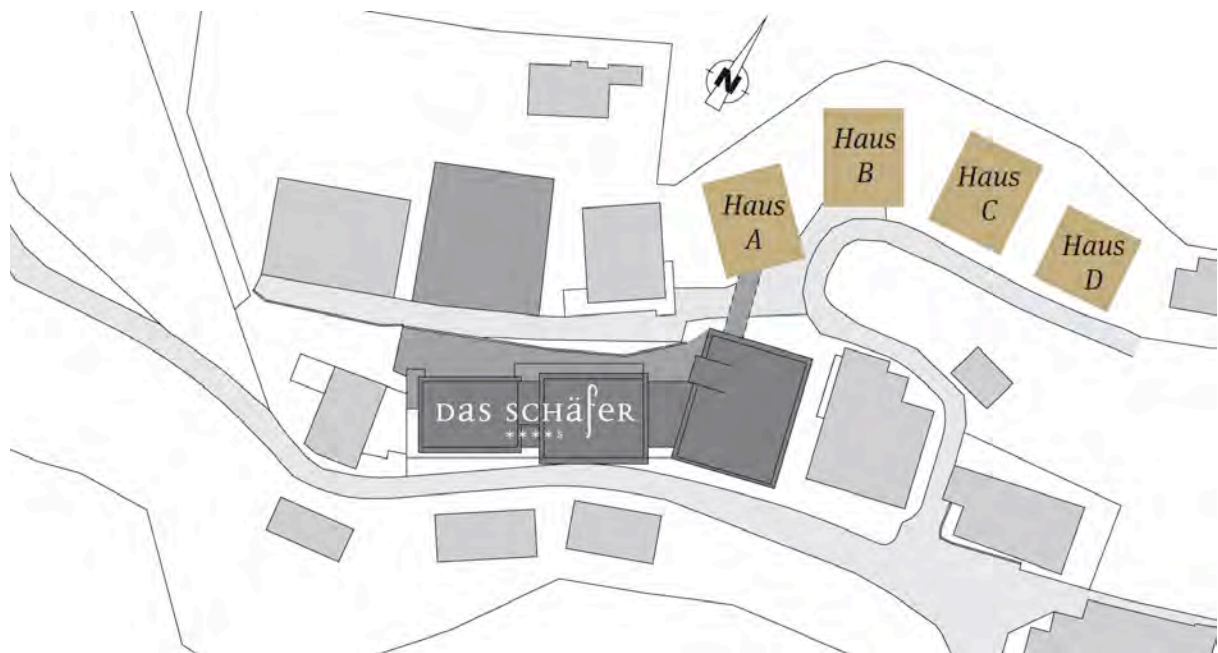
So if you have long been toying with the idea of having a main home or secondary residence well away from all the hustle and bustle of mass tourism, now is the best opportunity to feather the nest you have always wanted.

Christine and Rainer Schäfer



Alpine lifestyle

Fragrant wood, light glass, and clear lines that fit in with the traditional architectural surroundings. The Schäfer apartments do not seek to achieve short-term effects, but are clearly rooted in the region they are located in. "When it came to selecting the construction materials and furnishings, we did of course give preference to local choices. This was the only way to ensure that our project succeeded with an authentic vibe."



Overview of mountain apartments

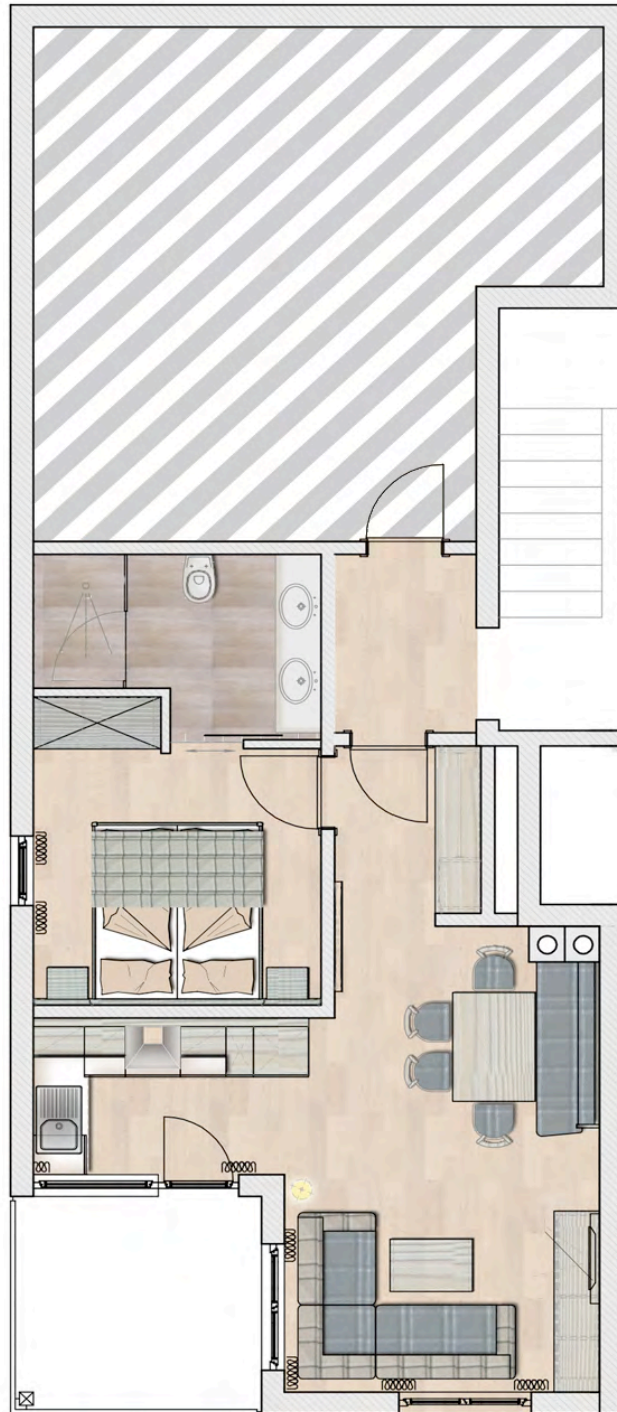
House A – "Schwarznasenschaf"

House B – "Steinschaf"

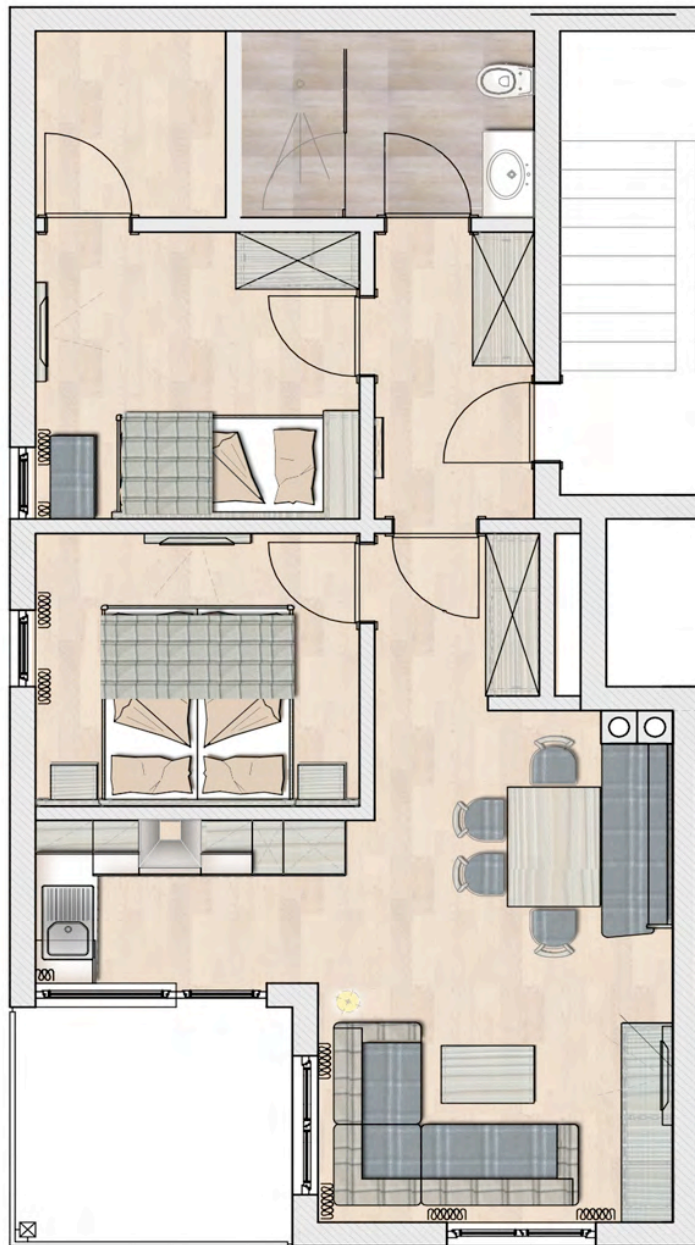
House C – "Alpenschaf"

House D – "Waldschaf"

Example 1 – approx. 47 m² (House B – "Steinschaf" – Top MA – B 101)



Example 2 – approx. 61 m²
(House A – "Schwarznasenschaf" – Top MA – A 101)



Design features and ecology

- Underground car park with marked parking spaces
 - Shingle and stone facade that retains its value
 - Local biomass district heating grid in Fontanella
 - Wooden windows and balcony doors with triple glazing made from spruce wood
 - Balcony floors in larch incl. solar protection
 - Connecting corridor to hotel and stairwells carpeted
 - SAT system
 - Passenger lift
-

Apartment highlights

- High-quality fixtures and fittings in kitchen
 - Alpine apartment furnishings with a simple elegance
 - Easily accessible walk-in showers
 - Brushed oak floorboards
 - Underfloor heating
 - Dedicated internet connection/W-LAN
 - Ski and shoe store
 - Dedicated basement storeroom
-

The best neighbourhood

With the Schäfers and their 4* hotel as immediate neighbours, you can enjoy the absolute luxury of your own four walls in combination with access to a hotel that you are always most welcome to visit. For example, you may wish to visit the hotel's own wellness section or enjoy Rainer Schäfer's biosphere park cuisine. Whatever takes your fancy.

Hotel facts:

- 1600 m² of wellness facilities and gardens
- Panoramic indoor pool and outdoor swimming channel
- Panoramic relaxation rooms
- Finnish sauna, Alpine herb sauna, steam bath
- Special spa for ladies with a relaxation zone
- Massages, beauty, yoga
- Fitness club for strength/stamina/cardio workout
- Heated year-round terrace
- Reading lounge
- Hotel bar and cigar lounge
- Underground car park

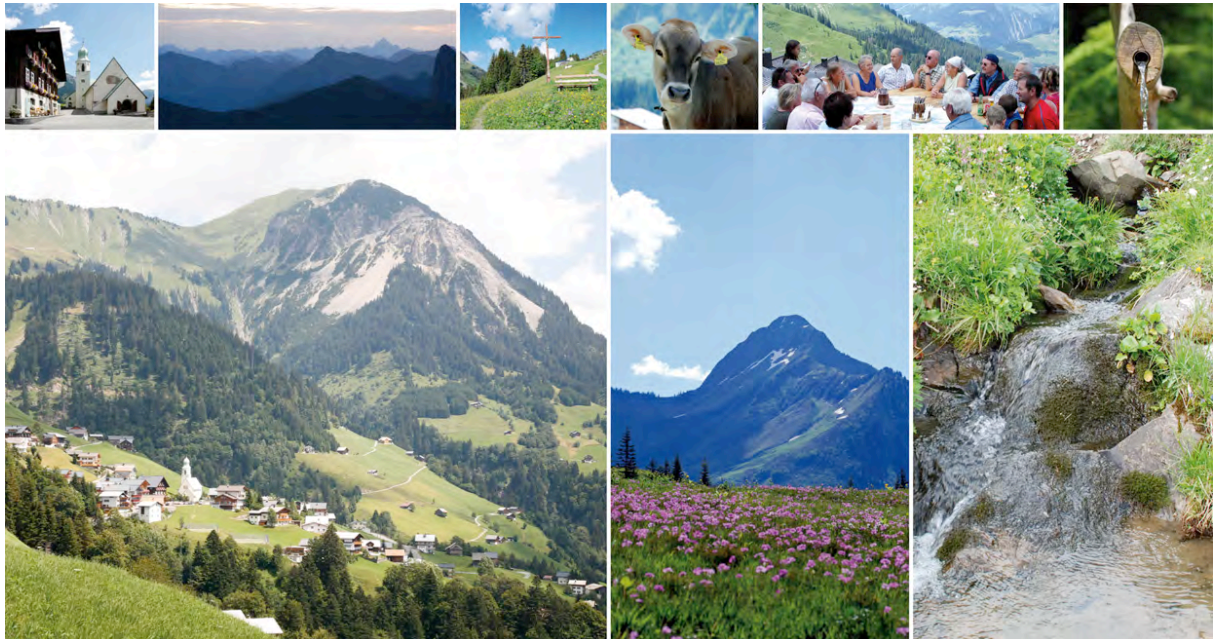
The “Großes Walsertal Biosphere Park“

On your doorstep: pure leisure.

In summer and in winter, your new home offers a wide range of delightful activities very close by. You should look upon the biosphere park as if it were your own and please treat it with the respect it deserves!

You can once again seek inspiration for your tours of discovery from your "good shepherds". Christine and Rainer Schäfer are qualified and above all enthusiastic mountain guides. With Rainer Schäfer as a state-certified ski instructor, you can experience and enjoy the beauty of the biosphere park on two boards. And very soon you too might also become a true expert on the Großes Walsertal – at all times of the year!

The website www.grosseswalsertal.at provides you with detailed information about all the special aspects of the biosphere park and how it sets the standard for other regions.



Make initial contact!

www.bergappartements.com

DAS SCHÄFER Betriebs-GesmbH
MD Rainer Schäfer
Kirchberg 77
A-6733 Fontanella
T +43 (0)5554 5228-0
info@bergappartements.com